

Pressurized Steel Boilers - oil / gas
from 23 to 4.652 KW



THERMOSTAHL[®]
SOLAR

HEATING AND SOLAR SYSTEMS

series **ENERSAVE**



ENERSAVE
series

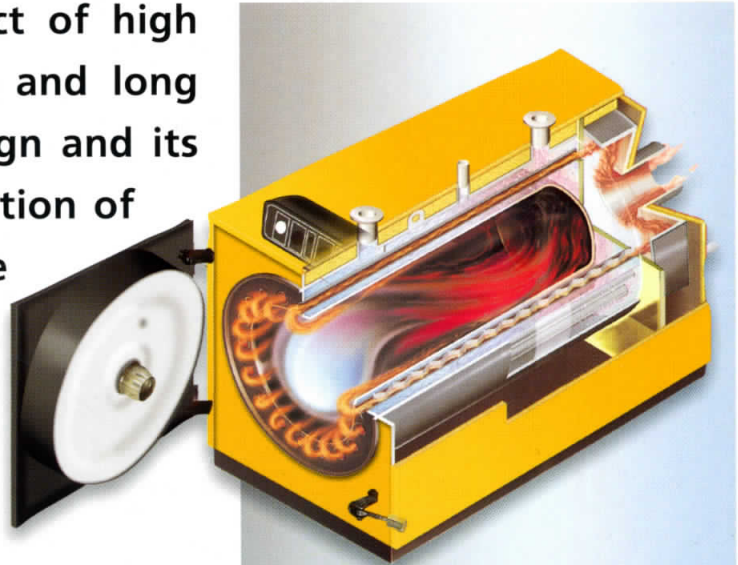


ENERSAVE PLUS
series



STEEL: The ideal material for

The ENERSAVE boiler is a product of high specifications, extensive research and long accumulated experience. The design and its whole construction are a combination of knowledge and experience on the steel boilers. ENERSAVE comes up to the newest concepts of boiler manufacturing.



POWER RANGE

The new boiler serie ENERSAVE with its 35 models covers a power range from 23 to 4.652 KW, in order to choose the most suitable boiler for the different requirements of the heating system.

FUEL

ENERSAVE boilers operate with heating oil, in accordance to DIN 51603, with natural gas, or liquid gas according to specifications DVGW of Germany and DIN 4788.

APPLICATIONS

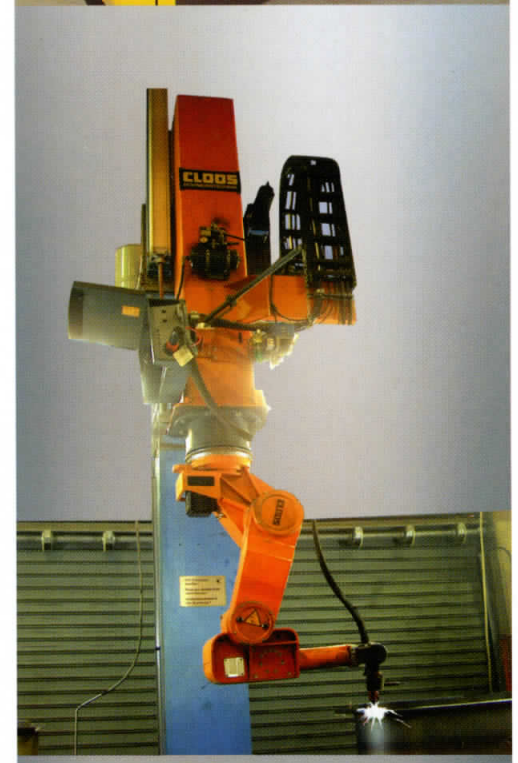
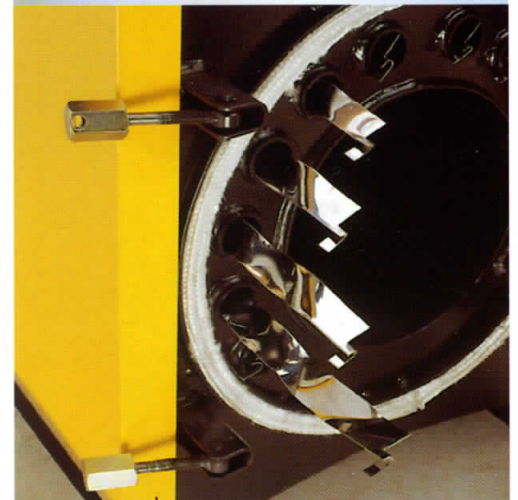
According to DIN 4751 ENERSAVE boiler is intended for water heating (up to 105°C), for central heating installations, as well as for other similar use. The maximum operating pressure allowed is 5 bars.

There is also PRESS boiler serie with working pressure up to 10 bar (after demand).

SPECIFICATIONS

Our boilers are manufactured at the modern plant of THERMOSTAHL factory, following the German specification DIN 4702. The manufacturing process is based on the European Norm DIN EN ISO 9001, as to the equipment, the manufacture and the control of subassemblies, as well as to specialized personnel and the design.

Moreover THERMOSTAHL has the quality mark CE from NTUA.



ADVANTAGES

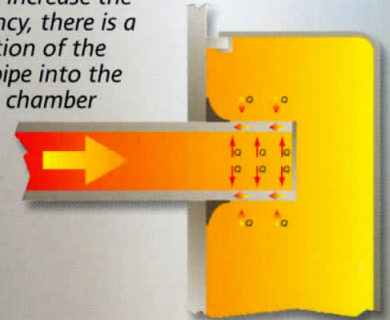
- Firm construction.
- Reliability.
- Energy savings.
- Friendly to the environment.
- Perfect design.
- Possibility of opening the door to the left or to the right.
- Easy maintenance.
- Overpressure combustion chamber.
- Rich heating surface.
- Three passes of burned gases.
- High level of performance $\geq 91\%$.
- Uniform thermal charge.
- Low exhaust gases ($180^{\circ}\text{C} - 200^{\circ}\text{C}$).
- Noiseless operation.
- Long lifespan without problems.



OPERATING PRINCIPLES

The operation is based on the furnace pressure that is created by the flame returning in the combustion chamber and the transfer of heat by radiation. The flue gas created by the fire reverses its flow direction at the end of the chamber and surrounds the flame at its whole length thereby preventing it from contacting the sheeting that forms the chamber. The flue-gas is led during its third pass to the smoke chamber through pipes, where it transfers its heat energy by conductivity.

In order to avoid condensates and to increase the efficiency, there is a projection of the flamepipe into the smoke chamber

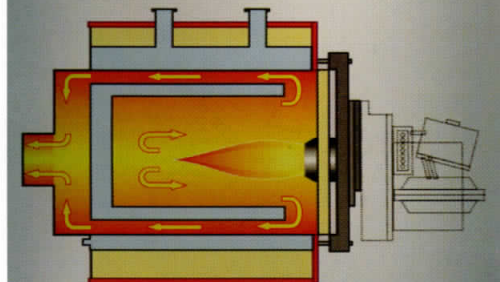


EFFICIENCY

The complete combustion (above 92% efficiency factor) ensures saving of fuel and minimum exhaust emissions, with high CO_2 percentage (14%), zero CO, low soot numbers (BACHARAH $<0,5$) and low NO_x emissions ($<120 \text{ mg/KWh}$), which means clean environment.

CONSTRUCTION

THERMOSTAHL boiler is a horizontal gas tubed boiler, of high counter pressure. It is manufactured so that all parts are exposed to the flame are water - cooled. The dimensions of the combustion chamber, the layout, the number and the size of the tubes, the special design of the gas turbolators and the strong outer insulation, have been studied in order to obtain a complete usage of the heat energy resulting from burning, with the least possible energy losses. Finally, each boiler is tested separately under hydraulic pressure at 8 bars, minimum, for strength and leak control.



CUTTING - WELDING

Cutting of sheet metal is accomplished by laser ray with high technology cutting machine. The welding of THERMOSTAHL boilers is made by the use of Robot machines (MIG - MAG method), as well as pulse current machines, according to DIN 50120. The quality of seams is under DIN 8563, class AS or AK. Welding material: DIN 8559 Wire, Gas EN 439 (M21).

CONSTRUCTION MATERIAL

Sheet metal, warm - rolled, St 37 - 2, DIN 17100.

MANNESMANN tubes, St 35 DIN 1629 seamless.

Gas turbolators INOX AISI 304.

Door heat - resistant material : PLICAST - LW - MIX - 124 (PLIBRICO).

EASY MAINTENANCE

The door of ENERSAVE boiler opens to the left or to the right, so that there is easy access to the combustion chamber for cleaning and is also equipped with a PYREX covered hole for easy visual inspection of the flame during operation. The smoke chamber cover is fastened with screws and has a special cleaning opening, which also acts as expansion opening.

GUARANTEE

The steel used to build ENERSAVE boiler is of excellent quality, so that long lifespan is ensured. The three years guarantee gives the possibility of repairing and replacing the boiler within the above - mentioned period, if you notice something wrong in the construction or in the materials, as such is confirmed by THERMOSTAHL.

CONTROL PANEL

THERMOSTAHL boiler is accompanied by a control panel, which is equipped with all the necessary instruments.

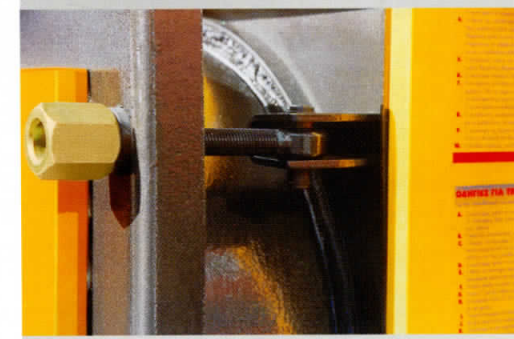
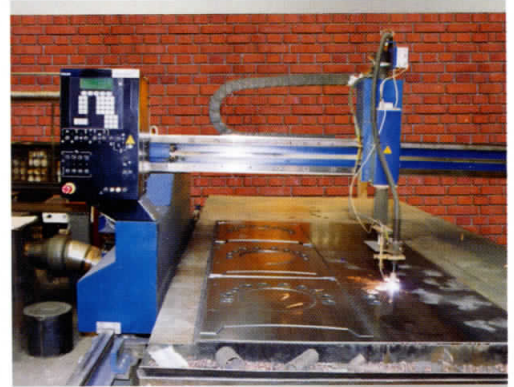
More specific these are: general switch, safety thermostat, burner thermostat, water pump thermostat, thermometer and operation lamps.

There is also provision for additional installation of all automatizations of a modern boiler facility for automatic function and energy saving.



INSULATION

THERMOSTAHL boiler carries a heavy insulation of 80 mm of aluminium covered glass wool. There is also insulation on the boiler's door and smoke chamber in order to minimize the thermal radiation losses.



Technical Characteristics

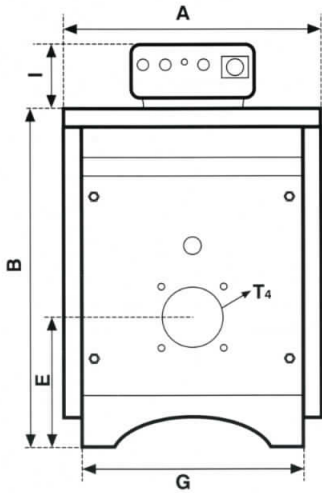
Boiler Type	Nominal power		Power range	Back pressure	Combustion chamber volume	Heated surface	Internal pressure fall	Water capacity	Weight	Maximum working pressure
	KW	Mcal/h	Mcal/h	Mm H ₂ O	Lit	m ²	(Δt=15°C)mmH ₂ O	Lit	Kg	bar
serie ENERSAVE										
EN 23	23,2	20	15 - 20	2 - 4	24	0,9	20	36	136	4
EN 35	34,9	30	20 - 30	2 - 4	24	1,0	20	41	142	4
EN 47	46,5	40	30 - 40	2 - 4	32	1,4	20	51	156	4
EN 58	58,1	50	40 - 50	4 - 6	40	1,6	30	61	172	4
EN 69	68,8	60	50 - 60	4 - 6	48	2,0	30	71	185	4
EN 81	81,4	70	60 - 70	4 - 6	52	2,2	40	102	220	4
EN 93	93,0	80	70 - 80	6 - 10	65	2,6	50	112	245	4
EN 116	116,3	100	80 - 100	7 - 12	78	3,1	60	122	269	4
EN 140	139,5	120	100 - 120	7 - 12	91	3,6	70	134	291	4
EN 160	162,8	140	120 - 140	8 - 16	144	4,1	80	214	382	4
EN 190	186,0	160	140 - 160	8 - 16	161	4,6	90	246	412	4
EN 210	209,3	180	160 - 180	10 - 20	174	5,1	100	266	439	4
EN 230	233	200	180 - 200	10 - 20	205	6,0	120	284	462	4
EN 260	256	220	200 - 220	10 - 20	206	6,2	130	372	605	4
EN 290	291	250	220 - 250	10 - 20	263	7,4	150	455	670	4
EN 350	349	300	250 - 300	20 - 30	320	8,7	180	528	735	4
EN 400	407	350	300 - 350	20 - 30	370	10,0	180	601	800	4
EN 460	465	400	350 - 400	20 - 30	444	12,0	220	580	1.230	4
EN 520	523	450	400 - 450	20 - 30	518	12,7	230	729	1.290	4
EN 580	581	500	450 - 500	20 - 30	518	13,2	230	704	1.350	4
EN 700	698	600	500 - 600	20 - 30	555	15,3	250	763	1.480	4
EN 800	814	700	600 - 700	30 - 40	665	17,3	300	824	1.620	4
EN 930	930	800	700 - 800	30 - 40	775	19,3	320	885	1.770	4
EN 1.050	1.047	900	800 - 900	30 - 40	986	21,2	350	1.235	2.420	5
EN 1.160	1.163	1.000	900 - 1.000	30 - 40	986	22,5	370	1.180	2.580	5
EN 1.500	1.453	1.300	1.000 - 1.300	30 - 40	1.182	27,3	400	1.330	2.690	5
EN 1.750	1.745	1.500	1.300 - 1.500	40 - 60	1.360	33,5	400	1.640	2.920	5
EN 1.900	1.919	1.650	1.500 - 1.650	40 - 60	1.585	36,3	420	1.790	3.170	5
EN 2.100	2.093	1.800	1.650 - 1.800	40 - 60	1.810	39,1	450	1.950	3.390	5
EN 2.300	2.326	2.000	1.800 - 2.000	40 - 60	2.185	48,1	470	2.590	4.580	5
EN 2.700	2.675	2.300	2.000 - 2.300	40 - 60	2.785	50,5	490	2.710	4.820	5
EN 2.900	2.887	2.500	2.300 - 2.500	50 - 70	3.273	59,5	500	2.950	5.480	5
EN 3.500	3.486	3.000	2.500 - 3.000	50 - 70	3.273	61,8	500	2.870	5.720	5
EN 4.000	4.070	3.500	3.000 - 3.500	50 - 70	3.767	70,2	520	3.110	6.320	5
EN 4.650	4.652	4.000	3.500 - 4.000	50 - 70	4.298	78,5	520	3.350	6.980	5
serie ENERSAVE-PLUS										
EN-PLUS 23	23,2	20	15 - 20	2 - 4	32	1,4	20	51	156	4
EN-PLUS 35	34,9	30	20 - 30	2 - 4	40	1,6	30	61	172	4
EN-PLUS 47	46,5	40	30 - 40	4 - 6	48	2,0	30	71	185	4
EN-PLUS 58	58,1	50	40 - 50	4 - 6	56	2,4	35	79	198	4
EN-PLUS 69	68,8	60	50 - 60	5 - 7	52	2,4	40	96	230	4
EN-PLUS 81	81,4	70	60 - 70	5 - 7	65	2,8	50	106	255	4
EN-PLUS 93	93,0	80	70 - 80	6 - 10	78	3,3	60	116	285	4
EN-PLUS 116	116,3	100	80 - 100	7 - 12	91	3,8	70	126	305	4
EN-PLUS 140	139,5	120	100 - 120	8 - 16	144	4,4	80	202	397	4
EN-PLUS 160	162,8	140	120 - 140	8 - 16	161	4,9	90	234	427	4
EN-PLUS 190	186	160	140 - 160	10 - 20	174	5,4	100	254	459	4
EN-PLUS 210	209,3	180	160 - 180	10 - 20	205	6,4	120	270	484	4
EN-PLUS 230	233	200	180 - 200	10 - 20	218	6,6	125	288	503	4
EN-PLUS 260	256	220	200 - 220	15 - 25	206	6,7	130	350	625	4
EN-PLUS 290	291	250	220 - 250	15 - 25	263	7,9	150	435	690	4
EN-PLUS 350	349	300	250 - 300	25 - 35	320	9,3	180	505	760	4
EN-PLUS 400	407	350	300 - 350	25 - 35	370	10,5	200	572	825	4
EN-PLUS 460	465	400	350 - 400	25 - 35	444	12,7	220	551	1.260	4
EN-PLUS 520	523	450	400 - 450	25 - 35	518	13,4	230	696	1.330	4
EN-PLUS 580	581	500	450 - 500	25 - 35	518	14,1	240	668	1.370	4
EN-PLUS 700	698	600	500 - 600	25 - 35	555	16,2	260	724	1.540	4
EN-PLUS 800	814	700	600 - 700	40 - 50	665	18,5	300	780	1.680	4
EN-PLUS 930	930	800	700 - 800	40 - 50	775	20,5	320	845	1.820	4
EN-PLUS 1.050	1.047	900	800 - 900	40 - 50	986	22,4	350	1.180	2.530	5
EN-PLUS 1.160	1.163	1.000	900 - 1.000	40 - 50	986	24,1	370	1.130	2.680	5
EN-PLUS 1.500	1.453	1.300	1.000 - 1.300	40 - 50	1.182	29,0	400	1.270	2.790	5
EN-PLUS 1.750	1.745	1.500	1.300 - 1.500	50 - 60	1.360	35,6	400	1.590	3.040	5
EN-PLUS 1.900	1.919	1.650	1.500 - 1.650	50 - 60	1.585	38,9	420	1.740	3.280	5
EN-PLUS 2.100	2.093	1.800	1.650 - 1.800	50 - 60	1.810	42,7	450	1.900	3.540	5
EN-PLUS 2.300	2.326	2.000	1.800 - 2.000	50 - 60	2.185	50,3	470	2.490	4.820	5
EN-PLUS 2.700	2.675	2.300	2.000 - 2.300	50 - 60	2.785	53,4	490	2.600	5.050	5
EN-PLUS 2.900	2.887	2.500	2.300 - 2.500	60 - 70	3.273	62,2	500	2.850	5.730	5
EN-PLUS 3.500	3.486	3.000	2.500 - 3.000	60 - 70	3.273	66,7	500	2.750	5.990	5
EN-PLUS 4.000	4.070	3.500	3.000 - 3.500	60 - 70	3.767	75,0	520	2.980	6.580	5
EN-PLUS 4.650	4.652	4.000	3.500 - 4.000	60 - 70	4.298	83,9	520	3.230	7.240	5

- The above dimensions are indicative and it is possible that they change in the future without warning, if new improvements require it.
- Boiler weights are estimated for empty boiler (without water) and with a door panelled by fireproof cement (not ceramic fibres).
- There are boilers for working pressure up to 10 bar (PRESS serie).

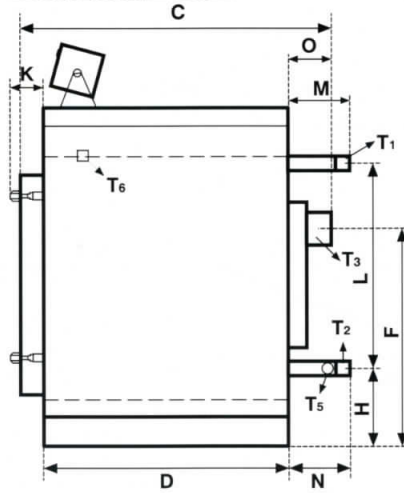
Dimensions

Boiler type	A	B	C	D	E	F	G	H	I	K	L	M	N	O	T1-T2	T3Φ	T4Φ	T5	T6
	mm	mm	mm	mm	mm	mm	mm	mm	mm	mm	mm	mm	mm	mm	in	mm	mm	in	in
serie ENERSAVE																			
EN 23	700	875	700	410	425	530	595	190	163	150	560	190	220	170	1¼"	139	106	½"	½"
EN 35	700	875	700	410	425	530	595	190	163	150	560	190	220	170	1¼"	139	106	½"	½"
EN 47	700	875	800	510	425	530	595	190	163	150	560	190	220	170	1¼"	139	106	½"	½"
EN 58	700	875	900	610	425	530	595	190	163	150	560	190	220	170	1½"	139	132	½"	½"
EN 69	700	875	1.000	710	425	530	595	190	163	150	560	190	220	170	1½"	139	132	½"	½"
EN 81	790	1.015	1.010	660	495	635	685	250	163	150	650	190	220	180	1½"	159	132	½"	½"
EN 93	790	1.015	1.110	760	495	635	685	250	163	150	650	190	220	180	1½"	159	132	½"	½"
EN 116	790	1.015	1.210	860	495	635	685	250	163	150	650	190	220	180	2"	159	132	½"	½"
EN 140	790	1.015	1.310	960	495	635	685	250	163	150	650	190	220	180	2"	159	132	½"	½"
EN 160	900	1.110	1.350	965	540	655	795	230	163	170	730	250	240	240	2"	193	151	½"	½"
EN 190	900	1.110	1.450	1.065	540	655	795	230	163	170	730	250	240	240	2"	193	151	½"	½"
EN 210	900	1.110	1.550	1.165	540	655	795	230	163	170	730	250	240	240	2½"	193	151	½"	½"
EN 230	900	1.110	1.700	1.315	540	655	795	230	163	170	730	250	240	240	2½"	193	151	½"	½"
EN 260	1.040	1.240	1.600	1.060	640	790	950	220	163	250	680	190	160	270	2½"	244	185	1¼"	½"
EN 290	1.040	1.240	1.850	1.310	640	790	950	220	163	250	930	190	160	270	2½"	244	185	1¼"	½"
EN 350	1.040	1.240	2.100	1.560	640	790	950	220	163	250	1.180	190	160	270	3"	293	185	1¼"	½"
EN 400	1.040	1.240	2.350	1.810	640	790	950	220	163	250	1.430	190	160	270	3"	293	185	1¼"	½"
EN 460	1.290	1.545	2.050	1.340	750	980	1.170	290	163	330	750	300	120	450	DN 100	343	260	1¼"	½"
EN 520	1.290	1.545	2.300	1.590	750	980	1.170	290	163	330	1.000	300	120	450	DN 100	343	260	1¼"	½"
EN 580	1.290	1.545	2.300	1.590	750	980	1.170	290	163	330	1.000	300	120	450	DN 100	343	260	1¼"	½"
EN 700	1.290	1.545	2.550	1.840	750	980	1.170	290	163	330	1.250	300	120	450	DN 100	343	260	1¼"	½"
EN 800	1.290	1.545	2.800	2.090	750	980	1.170	290	163	330	1.500	300	120	450	DN 125	343	260	1¼"	½"
EN 930	1.290	1.545	3.050	2.340	750	980	1.170	290	163	330	1.750	300	120	450	DN 125	343	260	1¼"	½"
EN 1.050	1.540	1.935	2.850	1.850	960	1.000	1.420	340	163	400	1.050	400	140	640	DN 125	395	340	1¼"	½"
EN 1.160	1.540	1.935	2.850	1.850	960	1.000	1.420	340	163	400	1.050	400	140	640	DN 125	395	340	1¼"	½"
EN 1.500	1.540	1.935	3.100	2.100	960	1.000	1.420	340	163	400	1.300	400	140	640	DN 150	483	340	1¼"	½"
EN 1.750	1.540	1.935	3.600	2.600	960	1.000	1.420	340	163	400	1.800	400	140	640	DN 150	483	340	1¼"	½"
EN 1.900	1.540	1.935	3.850	2.850	960	1.000	1.420	340	163	400	2.050	400	140	640	DN 150	483	340	1¼"	½"
EN 2.100	1.540	1.935	4.100	3.100	960	1.000	1.420	340	163	400	2.300	400	140	640	DN 150	483	340	1¼"	½"
EN 2.300	1.940	2.235	3.700	2.600	1.250	1.500	1.850	420	163	360	1.800	450	160	780	DN 200	581	380	1¼"	½"
EN 2.700	1.940	2.235	3.700	2.600	1.250	1.500	1.850	420	163	360	1.800	450	160	780	DN 200	581	380	1¼"	½"
EN 2.900	1.940	2.235	4.200	3.100	1.250	1.500	1.850	420	163	420	2.300	450	160	780	DN 200	645	380	1¼"	½"
EN 3.500	1.940	2.235	4.200	3.100	1.250	1.500	1.850	420	163	420	2.300	450	160	780	DN 200	645	380	1¼"	½"
EN 4.000	1.940	2.235	4.700	3.600	1.250	1.500	1.850	420	163	420	2.800	450	160	780	DN 200	645	410	1¼"	½"
EN 4.650	1.940	2.235	5.200	4.100	1.250	1.500	1.850	420	163	420	3.300	450	160	780	DN 200	645	410	1¼"	½"
serie ENERSAVE-PLUS																			
EN-PLUS 23	700	875	800	510	425	530	595	190	163	150	560	190	220	170	1¼"	139	106	½"	½"
EN-PLUS 35	700	875	900	610	425	530	595	190	163	150	560	190	220	170	1¼"	139	106	½"	½"
EN-PLUS 47	700	875	1.000	710	425	530	595	190	163	150	560	190	220	170	1½"	139	132	½"	½"
EN-PLUS 58	700	875	1.100	810	425	530	595	190	163	150	560	190	220	170	1½"	139	132	½"	½"
EN-PLUS 69	790	1.015	1.010	660	495	635	685	250	163	150	650	190	220	180	1½"	159	132	½"	½"
EN-PLUS 81	790	1.015	1.110	760	495	635	685	250	163	150	650	190	220	180	1½"	159	132	½"	½"
EN-PLUS 93	790	1.015	1.210	860	495	635	685	250	163	150	650	190	220	180	2"	159	132	½"	½"
EN-PLUS 116	790	1.015	1.310	960	495	635	685	250	163	150	650	190	220	180	2"	159	132	½"	½"
EN-PLUS 140	900	1.110	1.350	965	540	655	795	230	163	170	730	250	240	240	2"	193	151	½"	½"
EN-PLUS 160	900	1.110	1.450	1.065	540	655	795	230	163	170	730	250	240	240	2"	193	151	½"	½"
EN-PLUS 190	900	1.110	1.550	1.165	540	655	795	230	163	170	730	250	240	240	2½"	193	151	½"	½"
EN-PLUS 210	900	1.110	1.700	1.315	540	655	795	230	163	170	730	250	240	240	2½"	193	151	½"	½"
EN-PLUS 230	900	1.110	1.800	1.415	540	655	795	230	163	170	730	250	240	240	2½"	193	151	½"	½"
EN-PLUS 260	1.040	1.240	1.600	1.060	640	790	950	220	163	250	680	190	160	270	2½"	244	185	1¼"	½"
EN-PLUS 290	1.040	1.240	1.850	1.310	640	790	950	220	163	250	930	190	160	270	2½"	244	185	1¼"	½"
EN-PLUS 350	1.040	1.240	2.100	1.560	640	790	950	220	163	250	1.180	190	160	270	3"	293	185	1¼"	½"
EN-PLUS 400	1.040	1.240	2.350	1.810	640	790	950	220	163	250	1.430	190	160	270	3"	293	185	1¼"	½"
EN-PLUS 460	1.290	1.545	2.050	1.340	750	980	1.170	290	163	330	750	300	120	450	DN 100	343	260	1¼"	½"
EN-PLUS 520	1.290	1.545	2.300	1.590	750	980	1.170	290	163	330	1.000	300	120	450	DN 100	343	260	1¼"	½"
EN-PLUS 580	1.290	1.545	2.300	1.590	750	980	1.170	290	163	330	1.000	300	120	450	DN 100	343	260	1¼"	½"
EN-PLUS 700	1.290	1.545	2.550	1.840	750	980	1.170	290	163	330	1.250	300	120	450	DN 100	343	260	1¼"	½"
EN-PLUS 800	1.290	1.545	2.800	2.090	750	980	1.170	290	163	330	1.500	300	120	450	DN 125	343	260	1¼"	½"
EN-PLUS 930	1.290	1.545	3.050	2.340	750	980	1.170	290	163	330	1.750	300	120	450	DN 125	343	260	1¼"	½"
EN-PLUS 1.050	1.540	1.935	2.850	1.850	960	1.000	1.420	340	163	400	1.050	400	140	640	DN 125	395	340	1¼"	½"
EN-PLUS 1.160	1.540	1.935	2.850	1.850	960	1.000	1.420	340	163	400	1.050	400	140	640	DN 125	395	340	1¼"	½"
EN-PLUS 1.500	1.540	1.935	3.100	2.100	960	1.000	1.420	340	163	400	1.300	400	140	640	DN 150	483	340	1¼"	½"
EN-PLUS 1.750	1.540	1.935	3.600	2.600	960	1.000	1.420	340	163	400	1.800	400	140	640	DN 150	483	340	1¼"	½"
EN-PLUS 1.900	1.540	1.935	3.850	2.850	960	1.000	1.420	340	163	400	2.050	400	140	640	DN 150	483	340	1¼"	½"
EN-PLUS 2.100	1.540	1.935	4.100	3.100	960	1.000	1.420	340	163	400	2.300	400	140	640	DN 150	483	340	1¼"	½"
EN-PLUS 2.300	1.940	2.235	3.700	2.600	1.250	1.500	1.850	420	163	360	1.800	450	160	780	DN 200	581	380	1¼"	½"
EN-PLUS 2.700	1.940	2.235	3.700	2.600	1.250	1.500	1.850	420	163	360	1.800	450	160	780	DN 200	581	380	1¼"	½"
EN-PLUS 2.900	1.940	2.235	4.200	3.100	1.250	1.500	1.850	420	163	420	2.300	450	160	780	DN 200	645	380	1¼"	½"
EN-PLUS 3.500	1.940	2.235	4.200	3.100	1.250	1.500	1.850	420	163	420	2.300	450	160	780	DN 200	645	380	1¼"	½"
EN-PLUS 4.000	1.940	2.235	4.7																

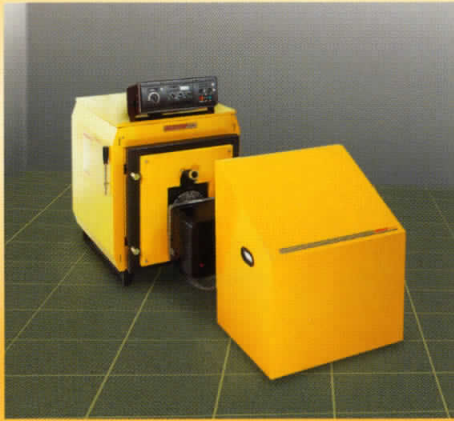
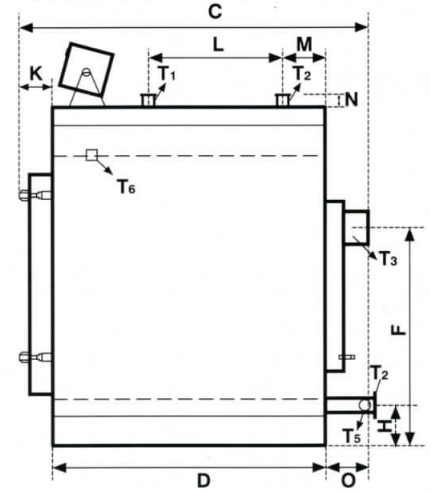
Dimensions



Boiler EN 23 - 230



Boiler EN 260 - 4.650

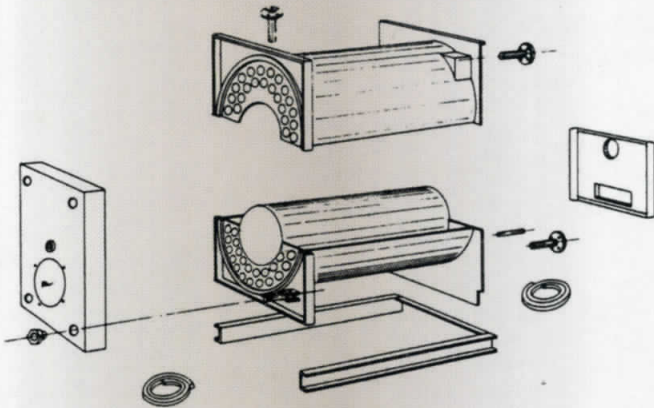


APPEARANCE

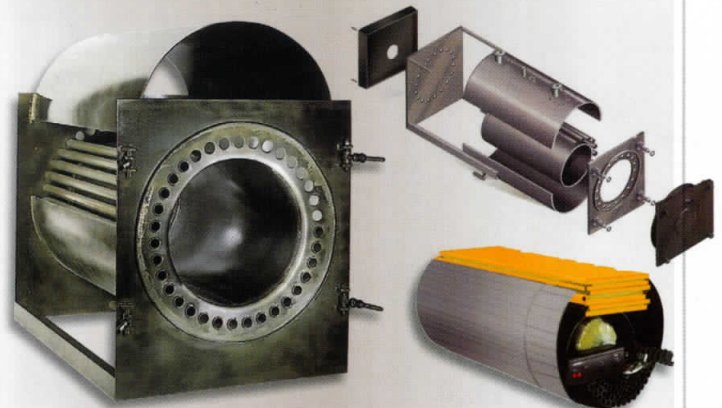
The modern design of THERMO STAHL boilers expresses the aesthetic and practical modern way of thinking, in the manufacture of boilers. ENERSAVE is equipped with sheet metal covers, electrostatically painted, which attach very quickly to the body of the boiler, and thus combine quality with flawless aesthetic appearance.



2-PART BOILERS MODULAR-F

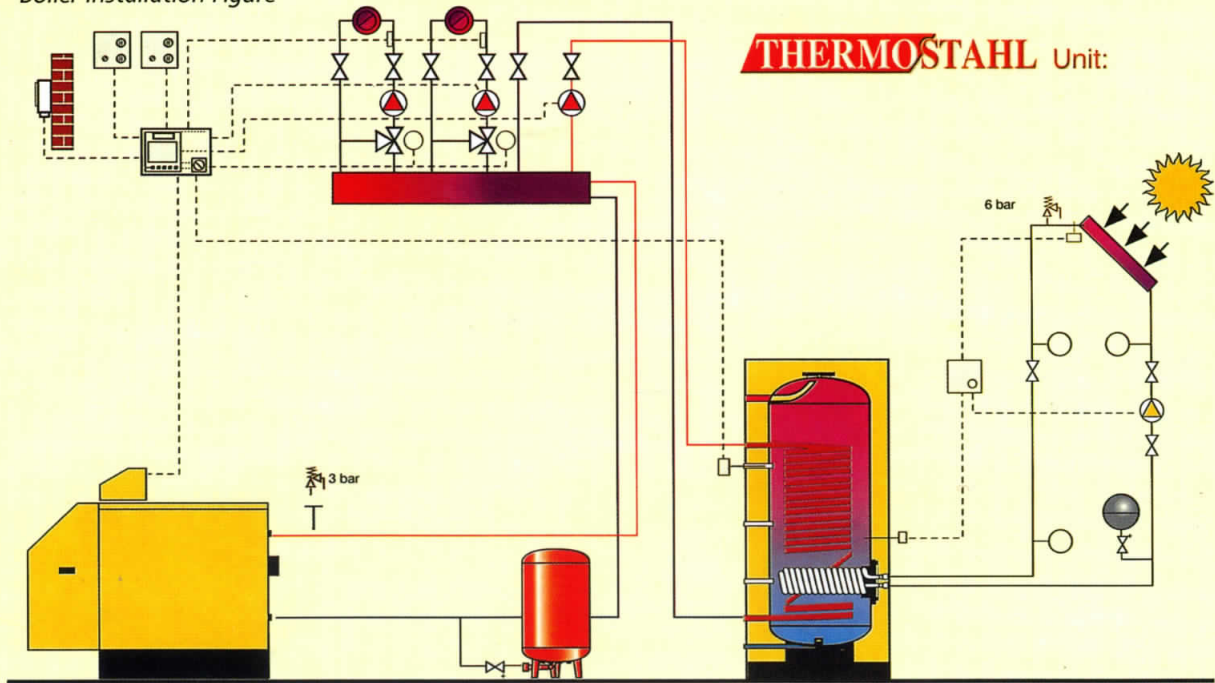


SPLIT BOILERS MODULAR-X



Modern
Technology
Equipment

Boiler Installation Figure



Training room



Show room – boilers in operation



Factory 1



Factory 2



Representative :

THERMOSTAHL[®]
SOLAR
HEATING AND SOLAR SYSTEMS

THERMOSTAHL SOLAR L.T.D.
HEATING AND SOLAR SYSTEMS
Aghialos – Thessaloniki, Greece, P.O.B. 1194 – P.C.57008
Tel. : (0030) 2310 710810, 710811, 722073
Fax: (0030) 2310 722074
site: www.thermostahlsolar.com - www.thermostahlglobal.com
emdil: info@thermostahlsolar.com